

# RobaPAR

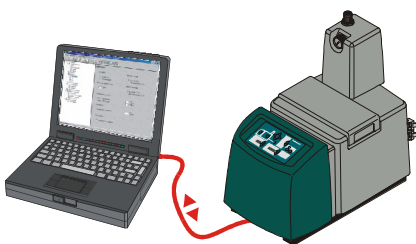
## Configuring data records via PC

The program »RobaPAR« permits to read, edit and write all data of Robatech hotmelt applicators and applicator controls. The data can be read from the appliance over the RS232 or Ethernet interfaces and further processed on a PC / notebook.

### Basic situation

So far, all operating parameters of the Robatech hotmelt applicators and applicator controls have been displayed and altered over the TRM operating interface. For this purpose the TRM surface features several keys and segment displays.

RobaPAR has been developed to simplify and rationalize the task of programming the appliances.



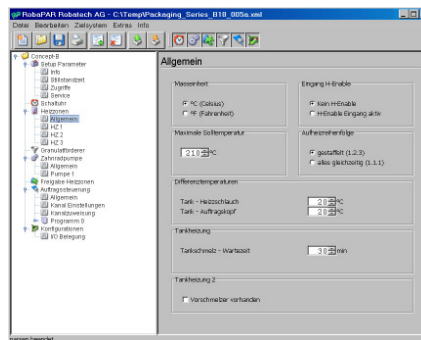
Communication via RS232 or Ethernet

### RobaPAR

The program RobaPAR is installed on a PC (Windows 2000 or XP) and the communication with the appliance takes place over the RS232 or Ethernet interface. All data of the Robatech control can be read, edited, saved and written back into the control by means of RobaPAR.

### Screen surface

RobaPAR provides all advantages of a Windows®-based software. The necessary support is offered to the operator on the surface, so that he/she can correctly set the parameters without operating instructions.



General setup window

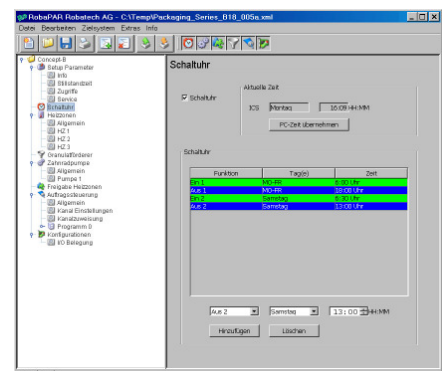
In the interest of an optimal user-friendliness the parameters are combined into groups:

- General setup
- Switch clock
- Heating zones
- Granulate feeder
- Gear pump
- Applicator control
- I/O configuration

The individual groups are displayed depending on the appliance and the installed accessories.

### Features and benefits

- Easy parameterization of the appliance on the PC/notebook
- Simple editing, changing and saving of data records
- Repeat data records can easily be downloaded on several appliances
- Desired data can be written into a file within a definable time period – factory data capture is possible
- Parameterization before installation is possible
- Updates to new program versions now also with RobaPAR



Setting the switch clock